

Injury attendances to Stepping Hill Emergency Department

October 2010 to September 2011

This report summarises recorded injury attendances to Stepping Hill Emergency Department (ED) between October 2010 and September 2011.

Between October 2010 and September 2011 there were 36,910 injury attendances to Stepping Hill ED. Males accounted for over half (55%) of all attendances. The month with the highest injury attendances was April (n=3,553) with December having the lowest attendances (n=2,713) (**Figure 1**). The majority (65%) of attendances did not have a specific injury group recorded. Of the specified injury groups, falls (12%) accounted for the highest proportion followed by sports injury (11%), road traffic collision (RTC) (6%) and assault (4%) (**Table 1**).

For all injuries, the highest proportion of attendances were for persons aged 5 to 19 (26%) and 20 to 34 (22%) years (**Figure 2**). Over half (55%) of fall attendees were aged 65 or over. Nearly half (46%) of assault attendees were aged 20 to 34 years. Almost four in ten (37%) of RTC attendees were aged 20-34 years (**Figure 3**).

The majority (85%) of attendees were white. Of the remaining attendees 8% were recorded as not stated whilst 5% were recorded as not known (**Table 2**).

The disposal of a patient can give an indication of the severity of the injuries sustained. Over six in ten (61%) of attendees were discharged, nearly a quarter (24%) were referred, and 11% were admitted (**Table 3**). Four-fifths (80%) of RTC attendees were discharged whilst nearly four in ten (37%) fall attendees were admitted (**Table 4**).

Table 5 shows the arrival methods of attendees at Stepping Hill ED. Nearly three-quarters (72%) arrived by car and 19% by ambulance.

Table 6 presents data for assault attendees to Stepping Hill ED. The majority of assault attendees were male (71%), nearly half (46%) were aged 20 to 34 years and 44% arrived by ambulance. Three in ten (30%) assault attendees presented at the ED between the hours of 8pm and 3.59am at weekends.

Figure 1: Stepping Hill ED: Total injury attendances by gender and month, October 2010 to September 2011

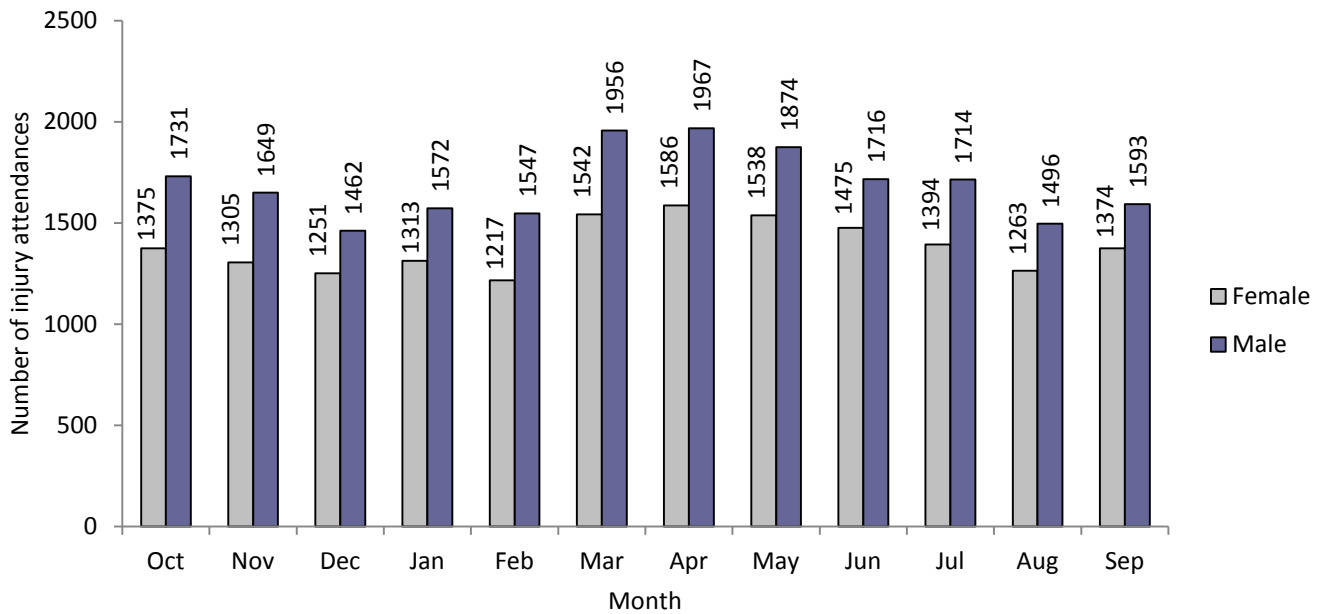


Table 1: Stepping Hill ED: Total injury attendances by injury group and month, October 2010 to September 2011*

Injury group	Oct	Nov	Dec	Jan	Feb	Mar	Apr	May	Jun	Jul	Aug	Sep	Total	%
Other injury	1972	1875	1838	1899	1811	2366	2394	2203	2081	1956	1693	1772	23860	65
Falls	326	355	409	329	309	310	345	392	366	399	392	352	4284	12
Sports injury	325	333	109	301	298	458	436	393	292	311	287	403	3946	11
RTC	254	249	189	163	158	156	161	224	199	162	145	199	2259	6
Assault	133	85	88	102	106	130	116	105	97	116	117	122	1317	4
Bites and stings	47	21	36	41	39	43	56	51	87	117	84	69	691	2
Burns and scalds	49	36	44	50	43	35	45	44	69	47	41	50	553	1
Total	3106	2954	2713	2885	2764	3498	3553	3412	3191	3108	2759	2967	36910	100

*Percentages may not add to 100 due to rounding.

Figure 2: Stepping Hill ED: Total injury attendances by age group and month, October 2010 to September 2011

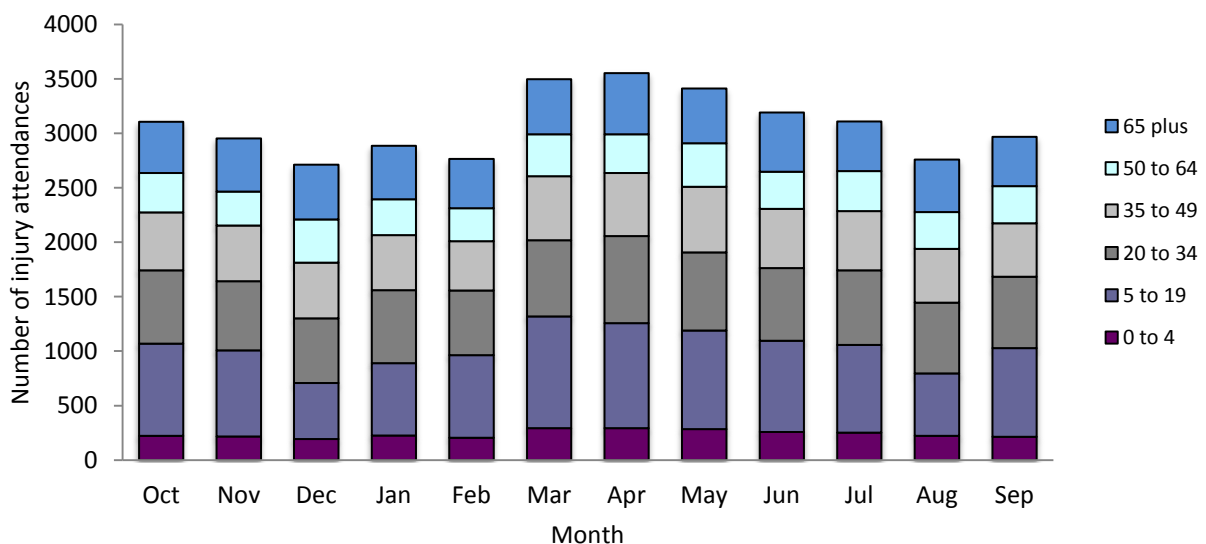


Figure 3: Stepping Hill ED: Total injury attendances by age group and injury group, October 2010 to September 2011

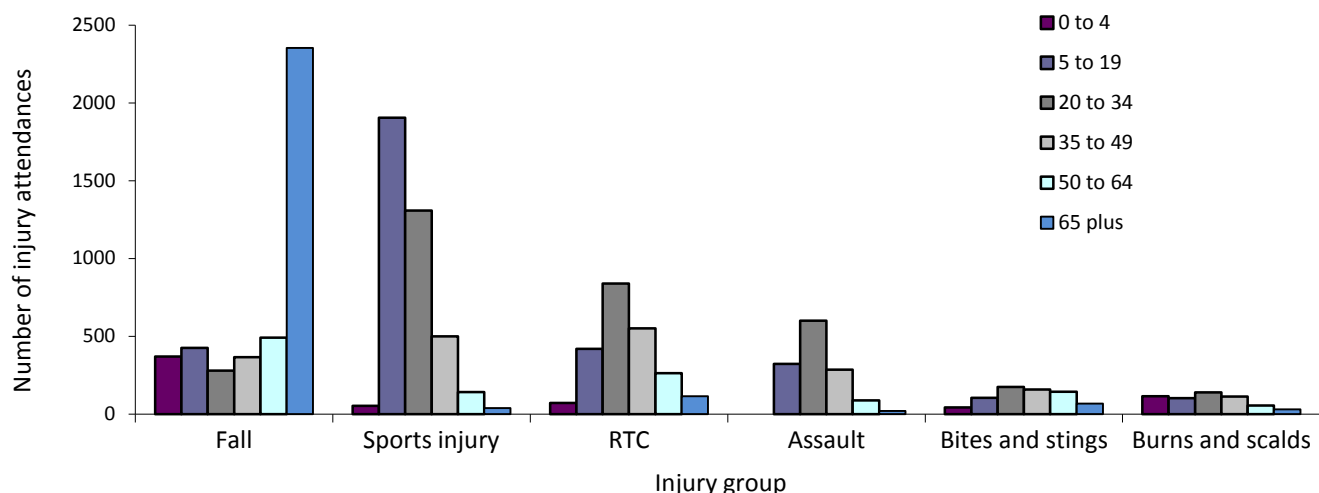


Table 2: Stepping Hill ED: Total injury attendances by ethnicity and month, October 2010 to September 2011^{12*}

Ethnicity	Oct	Nov	Dec	Jan	Feb	Mar	Apr	May	Jun	Jul	Aug	Sep	Total	%
White	2633	2515	2255	2459	2398	3028	3010	2905	2665	2701	2398	2579	31546	85
Not stated	237	218	235	217	184	218	254	262	256	256	270	318	2925	8
Not known	178	169	173	159	133	188	211	167	201	98	48	7	1732	5
Pakistani	20	10	10	***	***	9	18	20	17	10	12	13	150	0
Mixed	8	9	9	10	11	13	16	15	20	13	11	14	149	0
Indian	7	6	10	10	7	9	5	12	7	5	6	9	93	0
Any other ethnic group	7	6	8	7	8	8	6	7	8	8	6	7	86	0
Any other Asian background	***	***	6	6	6	8	16	7	9	10	5	5	84	0
Black	***	9	6	5	6	8	10	9	***	***	***	7	71	0
Chinese	7	***	***	6	***	5	***	***	***	5	***	***	46	0
Bangladeshi	***	5	***	***	***	***	***	***	***	***	***	***	28	0
Total	3106	2954	2713	2885	2764	3498	3553	3412	3191	3108	2759	2967	36910	100

*Percentages may not add up to 100 due to rounding.

Table 3: Stepping Hill ED: Total injury attendances by method of disposal and month, October 2010 to September 2011

Disposal	Oct	Nov	Dec	Jan	Feb	Mar	Apr	May	Jun	Jul	Aug	Sep	Total	%
Discharged	1853	1728	1623	1745	1713	2181	2188	2090	1901	1927	1727	1827	22503	61
Referred/follow-up	776	744	634	736	636	846	849	847	747	727	641	722	8905	24
Admitted	278	338	348	334	308	319	357	326	344	329	310	291	3882	11
Other	199	144	108	70	107	152	159	149	199	125	81	127	1620	4
Total	3106	2954	2713	2885	2764	3498	3553	3412	3191	3108	2759	2967	36910	100

Table 4: Stepping Hill ED: Total injury attendances by method of disposal and injury group, October 2010 to September 2011¹

Disposal	Fall		RTC		Assault		Bites and stings		Burns and scalds		Other injury		Sports injury		Total	
	n	%	n	%	n	%	n	%	n	%	n	%	n	%	n	%
Discharged	1880	44	1798	80	725	55	513	74	190	34	14837	62	2560	65	22503	61
Referred/follow-up	707	17	224	10	258	20	105	15	311	56	6138	26	1162	29	8905	24
Admitted	1567	37	125	6	135	10	36	5	29	5	1879	8	111	3	3882	11
Other	130	3	112	5	199	15	37	5	23	4	1006	4	113	3	1620	4
Total	4284	100	2259	100	1317	100	691	100	553	100	23860	100	3946	100	36910	100

¹ Please note that all numbers less than five have been suppressed in line with patient confidentiality and if there is only one number less than 5 in a category then two numbers will be suppressed at the next level.

² White = Irish, British, other white background; Mixed = white and black, white and Asian, mixed any other; Other = any other ethnic group, Any other Asian background; Black = African, Caribbean, other black.

Table 5: Stepping Hill ED: Total injury attendances by mode of arrival and month, October 2010 to September 2011

Mode of arrival	Oct	Nov	Dec	Jan	Feb	Mar	Apr	May	Jun	Jul	Aug	Sep	Total	%
Car	2257	2086	1848	2051	1937	2591	2618	2542	2309	2303	1945	2178	26665	72
Ambulance	568	589	567	571	531	563	618	560	611	554	572	565	6869	19
Bus	94	97	92	84	96	118	93	92	97	100	84	93	1140	3
Taxi	82	79	94	78	79	83	76	98	88	70	69	57	953	3
Walked	74	80	79	61	84	97	100	69	62	65	60	49	880	2
Other	22	16	17	21	25	23	35	39	7	6	10	14	235	1
Police vehicle	7	***	12	14	10	15	12	***	14	7	12	8	121	0
Bicycle	***	***	***	***	***	***	***	5	***	***	***	***	28	0
Public transport	***	***	***	***	***	***	***	***	***	***	***	***	19	0
Total	3106	2954	2713	2885	2764	3498	3553	3412	3191	3108	2759	2967	36910	100

Table 6: Total assault and all injury attendances by gender, arrival mode, age group and day/time of attendance, October 2010 to September 2011

	Assault attendees		All injury attendees (n=36,910)
	n	%	%
Gender			
Male	932	71	55
Female	385	29	45
Arrival mode			
Ambulance	579	44	19
Other	738	56	81
Age group			
0 - 4	0	0	8
5 - 19	323	25	26
20 - 34	600	46	22
35 - 49	286	22	17
50 - 64	88	7	11
65 plus	20	2	16
Day and time of attendance			
Weekend nights*	400	30	9
Weekend day	291	22	22
Weekdays	626	48	69

*8pm to 3.59am, Friday night/Saturday morning; Saturday night/Sunday morning; Sunday night/Monday morning

Author: Ian Warren, Published January 2012

For further information please contact: Ian Warren, Centre for Public Health, Liverpool John Moores University, 2nd Floor, Henry Cotton Building, 17-21 Webster St., Liverpool, L3 2ET, Tel: 0151 231 4513 or Email: i.j.warren@ljmu.ac.uk